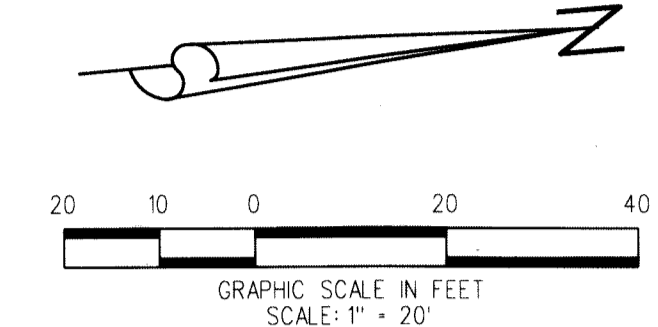


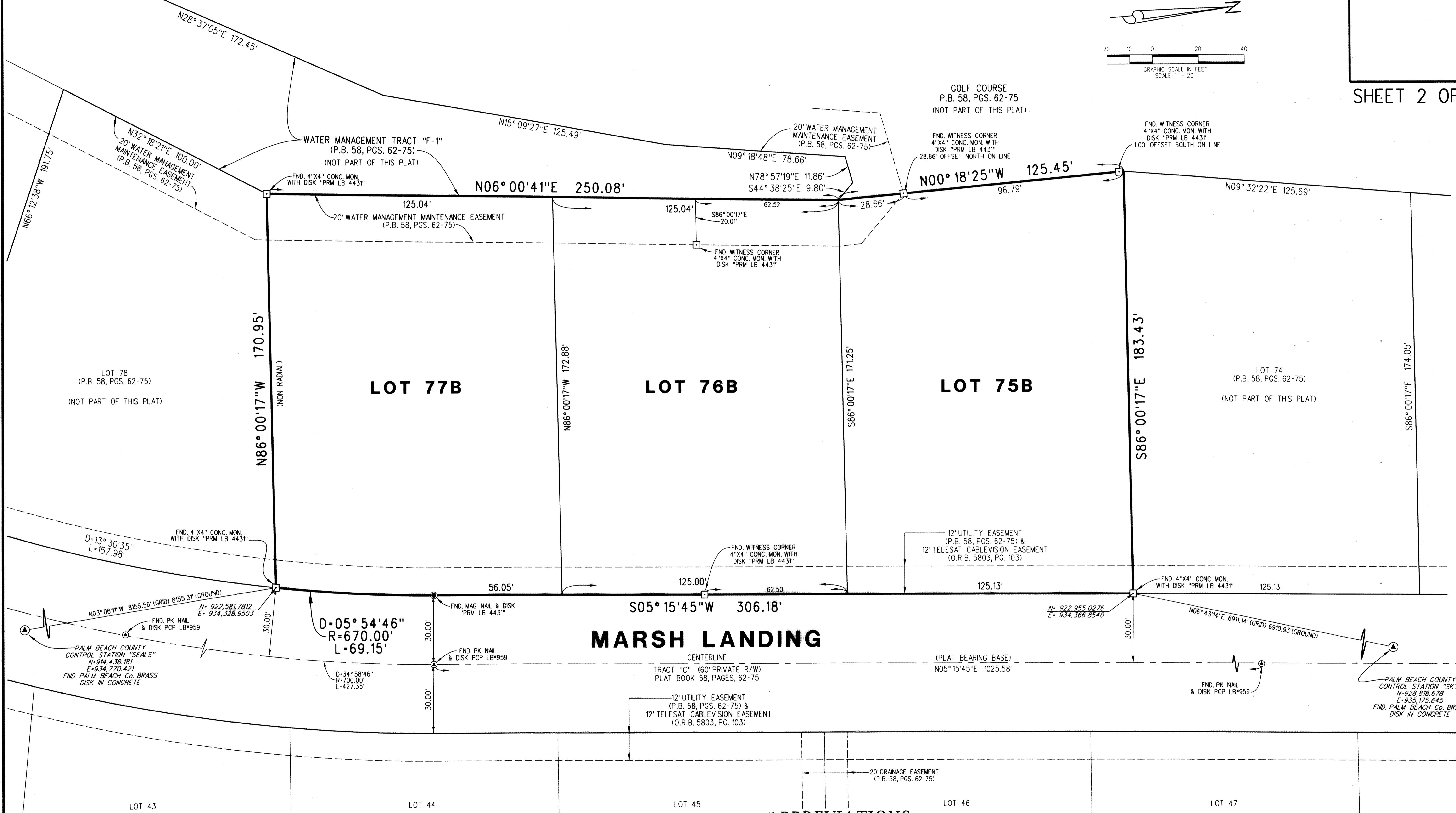
# OLD MARSH GOLF CLUB REPLAT No. 22

A PLANNED UNIT DEVELOPMENT

BEING A REPLAT OF LOTS 75A AND 77A, AS SHOWN ON OLD MARSH GOLF CLUB REPLAT No. 18,  
AS RECORDED IN PLAT BOOK 112, PAGES 33 THROUGH 34, PUBLIC RECORDS OF PALM BEACH COUNTY, FLORIDA  
SITUATE IN SECTION 28, TOWNSHIP 41 SOUTH, RANGE 42 EAST, PALM BEACH COUNTY, FLORIDA



SHEET 2 OF 2



### ABBREVIATIONS:

- CONC. = CONCRETE
- D = DELTA ANGLE
- FND. = FOUND
- L = ARC LENGTH
- MON. = MONUMENT
- P.B. = PLAT BOOK
- PCP = PERMANENT CONTROL POINT
- PGS. = PAGES
- PRM = PERMANENT REFERENCE MONUMENT
- R = RADIUS
- R/W = RIGHT OF WAY

**LIDBERG LAND SURVEYING, INC.**  
 675 West Indiantown Road, Suite 200,  
 Jupiter, Florida 33458 TEL. 561-746-8454

CAD.	K:\JUST \ 284142 \ 112-33 \ 07-150-306A \ 07-150-306A.DGN		
REF.			
F.L.D.	FB.	PG.	JOB 07-150-306A
OFF. CASASUS			DATE APRIL 2017
CKD. D.C.L.	SHEET 2	OF 2	DWG. D07-150PP